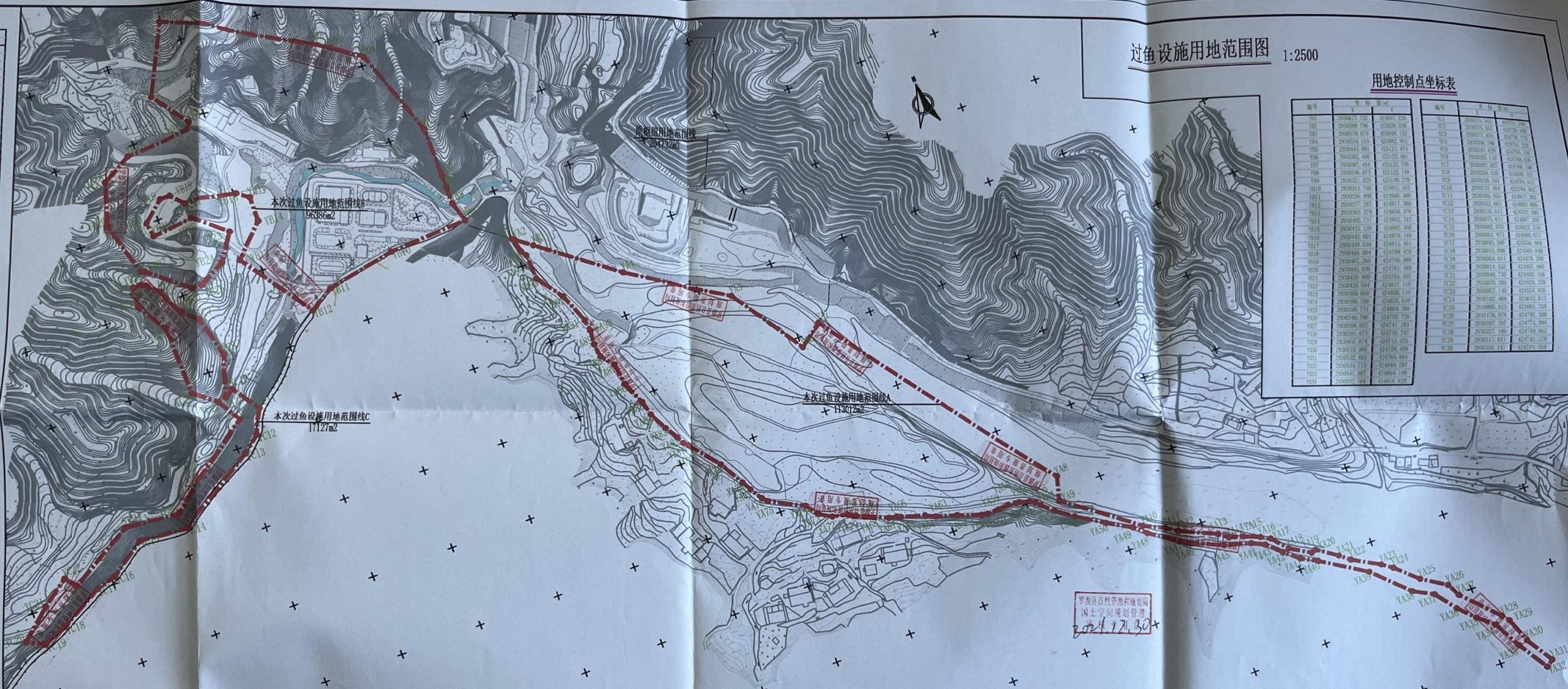


控制点坐标表

点号	X	Y
1	425176.701	121716.701
2	425176.701	121716.701
3	425176.701	121716.701
4	425176.701	121716.701
5	425176.701	121716.701
6	425176.701	121716.701
7	425176.701	121716.701
8	425176.701	121716.701
9	425176.701	121716.701
10	425176.701	121716.701
11	425176.701	121716.701
12	425176.701	121716.701
13	425176.701	121716.701
14	425176.701	121716.701
15	425176.701	121716.701
16	425176.701	121716.701
17	425176.701	121716.701
18	425176.701	121716.701
19	425176.701	121716.701
20	425176.701	121716.701
21	425176.701	121716.701
22	425176.701	121716.701
23	425176.701	121716.701
24	425176.701	121716.701
25	425176.701	121716.701
26	425176.701	121716.701
27	425176.701	121716.701
28	425176.701	121716.701
29	425176.701	121716.701
30	425176.701	121716.701
31	425176.701	121716.701
32	425176.701	121716.701
33	425176.701	121716.701
34	425176.701	121716.701
35	425176.701	121716.701
36	425176.701	121716.701
37	425176.701	121716.701
38	425176.701	121716.701
39	425176.701	121716.701
40	425176.701	121716.701
41	425176.701	121716.701
42	425176.701	121716.701
43	425176.701	121716.701
44	425176.701	121716.701
45	425176.701	121716.701
46	425176.701	121716.701
47	425176.701	121716.701
48	425176.701	121716.701
49	425176.701	121716.701
50	425176.701	121716.701
51	425176.701	121716.701
52	425176.701	121716.701
53	425176.701	121716.701
54	425176.701	121716.701
55	425176.701	121716.701
56	425176.701	121716.701
57	425176.701	121716.701
58	425176.701	121716.701
59	425176.701	121716.701
60	425176.701	121716.701
61	425176.701	121716.701
62	425176.701	121716.701
63	425176.701	121716.701
64	425176.701	121716.701
65	425176.701	121716.701
66	425176.701	121716.701
67	425176.701	121716.701
68	425176.701	121716.701
69	425176.701	121716.701
70	425176.701	121716.701
71	425176.701	121716.701
72	425176.701	121716.701
73	425176.701	121716.701
74	425176.701	121716.701
75	425176.701	121716.701
76	425176.701	121716.701
77	425176.701	121716.701
78	425176.701	121716.701
79	425176.701	121716.701
80	425176.701	121716.701
81	425176.701	121716.701
82	425176.701	121716.701
83	425176.701	121716.701
84	425176.701	121716.701
85	425176.701	121716.701
86	425176.701	121716.701
87	425176.701	121716.701
88	425176.701	121716.701
89	425176.701	121716.701
90	425176.701	121716.701
91	425176.701	121716.701
92	425176.701	121716.701
93	425176.701	121716.701
94	425176.701	121716.701
95	425176.701	121716.701
96	425176.701	121716.701
97	425176.701	121716.701
98	425176.701	121716.701
99	425176.701	121716.701
100	425176.701	121716.701

过鱼设施用地范围图 1:2500



用地控制点坐标表

编号	X	Y	编号	X	Y
101	425000.123	121800.456	201	425000.123	121800.456
102	425000.123	121800.456	202	425000.123	121800.456
103	425000.123	121800.456	203	425000.123	121800.456
104	425000.123	121800.456	204	425000.123	121800.456
105	425000.123	121800.456	205	425000.123	121800.456
106	425000.123	121800.456	206	425000.123	121800.456
107	425000.123	121800.456	207	425000.123	121800.456
108	425000.123	121800.456	208	425000.123	121800.456
109	425000.123	121800.456	209	425000.123	121800.456
110	425000.123	121800.456	210	425000.123	121800.456
111	425000.123	121800.456	211	425000.123	121800.456
112	425000.123	121800.456	212	425000.123	121800.456
113	425000.123	121800.456	213	425000.123	121800.456
114	425000.123	121800.456	214	425000.123	121800.456
115	425000.123	121800.456	215	425000.123	121800.456
116	425000.123	121800.456	216	425000.123	121800.456
117	425000.123	121800.456	217	425000.123	121800.456
118	425000.123	121800.456	218	425000.123	121800.456
119	425000.123	121800.456	219	425000.123	121800.456
120	425000.123	121800.456	220	425000.123	121800.456
121	425000.123	121800.456	221	425000.123	121800.456
122	425000.123	121800.456	222	425000.123	121800.456
123	425000.123	121800.456	223	425000.123	121800.456
124	425000.123	121800.456	224	425000.123	121800.456
125	425000.123	121800.456	225	425000.123	121800.456
126	425000.123	121800.456	226	425000.123	121800.456
127	425000.123	121800.456	227	425000.123	121800.456
128	425000.123	121800.456	228	425000.123	121800.456
129	425000.123	121800.456	229	425000.123	121800.456
130	425000.123	121800.456	230	425000.123	121800.456
131	425000.123	121800.456	231	425000.123	121800.456
132	425000.123	121800.456	232	425000.123	121800.456
133	425000.123	121800.456	233	425000.123	121800.456
134	425000.123	121800.456	234	425000.123	121800.456
135	425000.123	121800.456	235	425000.123	121800.456

说明：  
 1、本图采用国家2000坐标系，图中高程以米计；  
 2、图中本次用地范围用“——”表示，原征用地范围用“---”表示；  
 3、本征地线以本工程过鱼设施专项设计报告审批后的路线及进行中的施工图设计成果为依据，并结合国土资源部门复核成果进行修正；  
 4、本图本次用地范围为三部分，用地总面积为226525m<sup>2</sup>（339.8亩）。

福建省水利勘测设计研究院  
 福建省水利勘测设计研究院  
 水利行业  
 甲级  
 证书编号：水规[2005]011211  
 有效期至：2025年01月21日

<b>福建省水利勘测设计研究院</b> FUJIAN RESEARCH INSTITUTE OF INVESTIGATION AND DESIGN OF WATER RESOURCES AND HYDROPOWER		设计序号	A135003723
批准		福建省罗源霍口水库工程	
核定		施工图	
审查	周祥光	设计	
校核	陈侯	过鱼设施用地范围图	
设计	林斌	图号	2012029-S772-01-2
		日期	2021.12